

**E-services - WEBCON BPS is a complete low-code platform
for electronic document workflow**

that allows you to create flexible processes quickly and
without coding, and adapt them on the fly to the evolving
needs with InstantChange™ technology.

The solution allows you to digitize and automate
any business process at your university.



ALUMNI SUCCESS



DEAN'S OFFICE



CDIPLOMA



ENROLLMENT



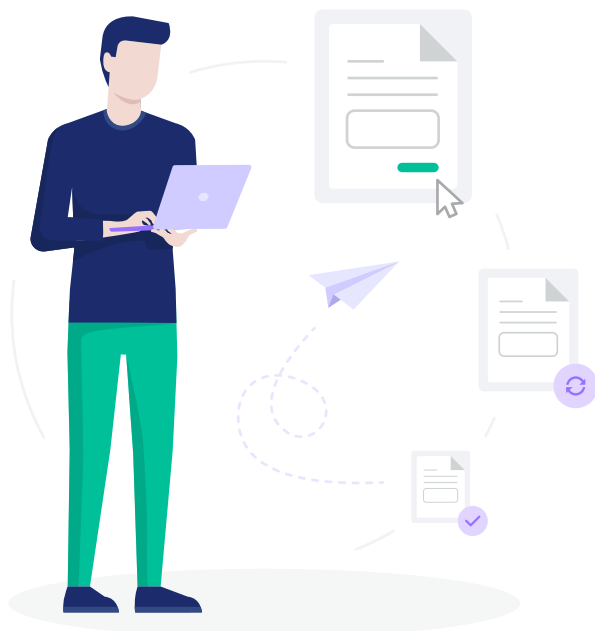
MOBILE APP



ANALYTICS

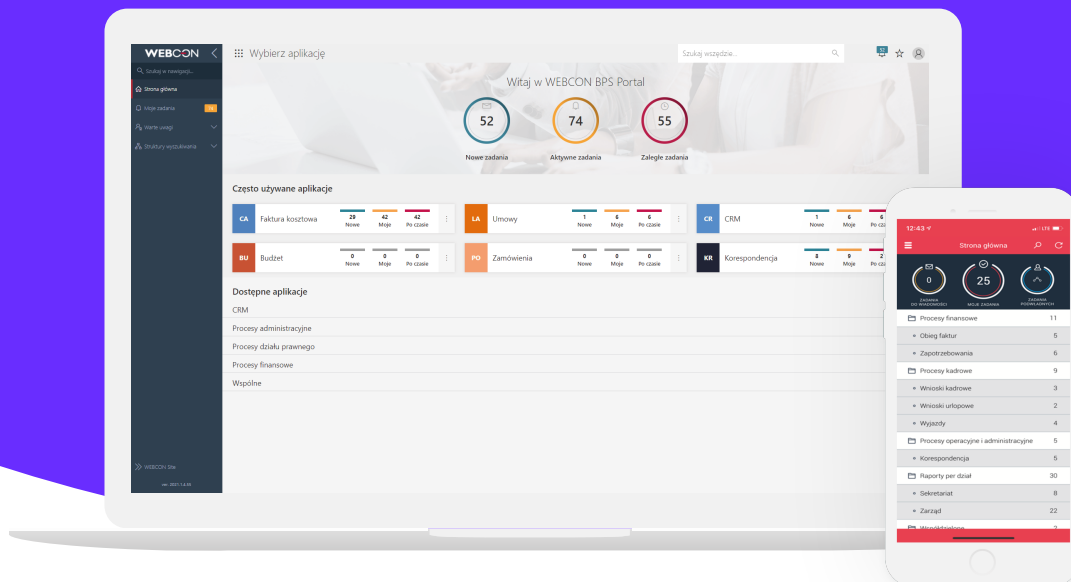


SYLLABUSES



E-Services WEBCON is an integral part
of **educcloud**, a new generation of IT solutions
for universities focused on the needs
of Organization and Students.

Modern user interface



Benefits:

University authorities and administration

- › Control over management and operational processes across the university, progress monitoring and planning
- › Reduced costs of maintaining and updating processes
- › Increased efficiency and productivity
- › Streamlined management of procedures and assurance of compliance and certification

University staff

- › Automation and optimization of repetitive tasks with guaranteed compliance with applicable procedures
- › Improved communication and quality of collaboration, resulting in better employee satisfaction
- › Time savings that can be dedicated to research work or supporting students

IT Department

- › Control over processes and forms with a single tool that integrates data from multiple systems
- › 50% faster application delivery time compared to other workflow systems
- › Easy integration of applications with university systems (e.g. ERP, SIS, CRM)
- › Building applications and implementing them in a time usually spent on requirements analysis alone

Functionalities:

- Possibility to meet any business need of all university departments
- Implementation of complex, scalable and modifiable solutions in DevOps model
- Forms and workflows creation
- Automatic registration of documents
- Integration with external systems
- Support for batch scanning, OCR and document generation
- Access to documents and tasks via Outlook
- Mechanisms for archiving, retention and versioning of documents
- Support for hot-folders, hot-mailboxes and barcodes
- Dedicated attachment databases for metadata (per system), attachments (per process) and archive
- Support for digital signatures
- Analysis of anomalies in running of implemented processes
- Clear, customizable, individual reports and analytical charts
- Creating custom dashboards that bring together all the elements important to the user in one place
- Fully responsive interface available through a web browser and mobile app

SCHEDULE A PRESENTATION ➔

At your university or through a video call.
Contact us!